

VILA NOVA DE FAMALICÃO A CITY WITH AN IDENTITY

EN

JANUARY 2019 / DIGITAL PUBLICATION



[www.facebook.com/
municipiodevnfamalicao](http://www.facebook.com/municipiodevnfamalicao)

[www.twitter.com/
CMVNFamalicao](http://www.twitter.com/CMVNFamalicao)

[www.instagram.com/
municipio_de_famalicao](http://www.instagram.com/municipio_de_famalicao)

**Famalicão
está nas redes
sociais!!**

Follow us on social
networks!!

Suivez-nous sur les
réseaux sociaux!!

Welcome to Famalicão!

Discovering Vila Nova de Famalicão is contacting with one of the most important cities of Portugal. With a huge national and international well-known industry, as well as a social, cultural and sportive great dynamic, this city is breathing trust, proud and initiative.

A land of culture and knowledge, Famalicão is a city of the present, but, mainly, a city of the future, that is highlighted by social, institutional and business dynamism. Here, you'll find places with cultural interest, such as Camilo House-Museum, that is part of the 13 museum units network of the municipality, and also the Casa das Artes [House of Arts]. There are also the big relief initiatives such as Carnival, "Antoninas" Festival (Saint Anthony's Celebrations) and the Handicraft and Food Fair. However, it's the high energy of these events that throws Famalicão as a young, ambitious, daring and innovative city.

This Municipal Booklet, particularly oriented to tourism, was carefully made for those who don't know the city and would like to visit us. Over this 60 pages, it will be possible to find out a territory with a rich and diversified social and cultural tradition, and a community with a very strong personality. A fantastic land to live, to work, to invest and to visit.

Welcome to Vila Nova de Famalicão, a city with an identity!



Paulo Cunha

Mayor of the City of
Vila Nova de Famalicão

Paulo Cunha

INDEX

P. 14

SURREALISM PORTUGUESE CENTRE

Here we have more than three thousand surrealism works made by authors as Mário Cesariny and Artur Cruzeiro Seixas, within a universe of around 130 artists. These works are waiting for your visit. But there is even more and more to discover in this emblematic building of the Cupertino de Miranda Foundation.

P. 26

AUTOMOBILE MUSEUM

Let yourself be surprised by a great wealth collection, composed of about a hundred antique and classic cars. Be part of this cult!

P. 34

COLONIAL WAR MUSEUM

An honorable tribute to all former combatants of the Portuguese colonial war.

P. 44

“ANTONINAS” CELEBRATIONS

On the most popular parties of the city, you will find lots of animation proposals and a great devotion to Saint Anthony.

P. 53

ALA DA FRENTE GALLERY

For those who like to be in the contemporary arts and culture forefront, the Ala da Frente Gallery is a place of compulsory visit!

P. 08

CAMILO'S HOMELAND

You will find here in Famalicão the deep feelings of love and passion which seduced the writer Camilo Castelo Branco.



P. 30

BERNARDINO MACHADO MUSEUM

The majestic Barão da Trovisqueira's Mansion, where Bernardino Machado Museum is installed, hosts the exhibition of the memories and of the political and social action of this prominent man who was President of the Portuguese Republic, as well as pedagogue, statesman and a wellknown scientist.



P. 48

HANDICRAFT FAIR

The wealth of the national handicraft – a unique and genuine heritage which we need to protect more and more – is shown in Famalicão city every year since the early days of September, in the bigger Handicraft and Food Fair of Minho region. Visit this touristic-cultural event of national impact!

P. 54

ROMANIC ROUTE

Come to visit the heritage of the city of Famalicão and let yourself be enchanted for these sacred spaces of the romanic architecture, which are really ex-libris of our collective history.



P. 18

RAILWAY NATIONAL MUSEUM

Come aboard of the historical locomotives which went through all over the country during the first half of the 20th century. Don't miss the call!



P. 36

DEVESA'S PARK

The heart of the city is really green and full of life. It has a rich fauna and flora and a wide range of exciting activities to experiment all over the year. Come to discover...

P. 50

GASTRONOMY

Famalicão is also a land of many flavours. That's an invitation to take a sit on the table and taste!



P. 22

TEXTILE INDUSTRY MUSEUM

Which are the sewing threads used to weave time? Come to discover the greatest history about the textile industry of Vale do Ave, in the front line of the spinning and weaving machines!

P. 32

WELCOMING LAND

Come to explore Vila Nova de Famalicão, a very well located city between the mountains and the sea, which is remarkable for its cultural dynamism and rich heritage, as well as for the beauty and charm of its green landscape.

P. 40

OUR CARNIVAL

The most popular and genuine “entrudo”(shrovetide) of the country is here in Famalicão... You won't miss, so put it in the agenda.

P. 52

HOUSE OF ARTS

This House of all Arts offers a very contemporary and eclectic programming, with a charismatic and quality space, attracting and increasing such a greater number of people. This place is also yours, come and enjoy it!

P. 60

SPORTS

The sporting events that really excite people from Famalicão are here! Put it in your agenda and come to participate!

P. 62

CONTACTS

Get lost in the corners of Vila Nova de Famalicão city and, if you need some suggestions, please contact us!

AMONG THE MONASTERIES AND THE MUSEUMS,

There are letters in the paths of Famalicão city

Besides the house of the great novelist Camilo Castelo Branco, this land of industry has several cultural places spread out.

It was a doomed love that took Camilo Castelo Branco to settle his office desk in S. Miguel de Seide. It was there, in the house built by the husband of his beloved woman, that he wrote most of his work and put an end to the blindness that prevented him from using the feather. From the House of Camilo (and the Literary Study Centre, right next door), the roads of letters and arts are taking us to the heart of a territory shaped by the industry and refreshed by culture. This city was born from crossroads, in resemblance with S. Paulo in Brazil. Without beach or mountains, but with the river Ave crossing by, this territory was riddled with textiles since the beginnings of the 19th century. While people were changing from farming work to the textile fabrics, the elites were creating museums for the heritage preservation. Today, the museum outlook in Famalicão is similar to that of big cities, with 11 different museums about various subjects. Besides the Camilo Castelo Branco's House-Museum, we also have the Textile Industry Museum, the Railway Museum of Lousado (where locomotives and carriages are exposed), or the museum in honour to Bernardino Machado, son of this land, who was twice President of the First Republic of Portugal. However, we'll find here much more. We preserve sacred art, a rich house from the beginning of the last century (Soledade Malvar House-Museum), remarkable old cars (Automobile Museum) and we also keep alive memories from the Colonial War. From the House of Camilo, the roads of letters are taking us, for sure, to the Cupertino de Miranda Foundation, surrealism sanctuary where we can find the artistic and poetic memory of Mário Cesariny de Vasconcelos. As we said before, Famalicão doesn't have sea nor saws, so this city bets on the quality of the urban parks, such as the Devesa's Park and the Sinções' Park, which are, for sure, very special green areas right in the middle of the city. By the time of sitting around the table, there

are many reasons for tasting here. The gastronomy, is that typical from the region, and the restaurants are recognized for their quality. Visiting the city of Famalicão gives you the answer to the question putted by the writer: "Where is the happiness?"

*Text from: Secundino Cunha,
Journalist of Correio da Manhã Journal*



Camilo's homeland

"I live in a country house for 27 years, in Vila Nova de Famalicão, known as S. Miguel de Seide. Here I wrote most of my books."

Camilo Castelo Branco, Writer and Novelist



THE HOUSE – THE GREATEST LIVING MEMORY OF CAMILO

Here we can breath the genuine environment by the time of Camilo

Camilo Castelo Branco (1825-1890) was one of the most brilliant and striking Portuguese literature writers of all time and perhaps the biggest figure of the romantic movement. The author of “Amor de Perdição” had a very troubled life, which was an inspiration to his books.

Increasingly, Vila Nova de Famalicão is the land of Camilo Castelo Branco and the references to his life and work are everywhere.

“The house where I live is surrounded by wailed pines, which beneath any breeze its harps perform. This unrelenting whisper is the language of the night that talks to me: it seems to be the voice from the other world, with a hustle that leaven from far away in the eternity doors (...)”

(Camilo, Amor de Salvação)

Camilo Castelo Branco (1825-1890) settled down on the yellow house in S. Miguel de Seide during the winter of 1863. There, he lived with Ana Plácido for 26 years, until the fateful day of June 1st in 1890. He wrote, also there, some of the most beautiful pages of the Portuguese literature, on an intense process of literary creation and due to his and others misfortune, portraying the most remarkable and genuine traits of the nineteenth-century in Portugal and of the Portuguese soul of all times.

Location

41°23'48.1"N 8°27'50.9"W

Schedule

Tuesday to Friday: from 10:00 am to 5:30 pm
Weekends: from 10:30 am to 12:30 pm and from 2:30 pm to 5:30 pm
It closes on Mondays and holidays

Free entrance

www.camilocastelobranco.org

RPM

This museum takes part in the Portuguese Museums Network



It is considered to be the biggest living memory of Camilo and one of the most well-known and prestigious House-Museum of the country



A visit to Seide S. Miguel

Camilo's bust

In March 1925, during the celebration of the 1st century of the birth of Camilo Castelo Branco, the "Oporto Trade" offered to the City Council of Famalicão a bronze bust of the novelist, made by Henrique Araújo Moreira.

Nuno's chalet (Camilo's son)

Camilo lived his last years of life in the stolen waters of the old building, that is today the head office of the Parishes Union of Seide.

The church

The church is just in front of the house where Camilo lived. That's why there is really a lot of histories written by Camilo which were inspired by the temple.

The family

It is in "S. Miguel de Seide", in a truly environment influenced by Camilo, where we can find his family members remains, namely his wife Ana Augusta Plácido and his son Nuno Plácido Castelo Branco, among others.



STUDIES' CENTRE OF THE WRITER CAMILO CASTELO BRANCO

When two geniuses get together...

Here the genius of the writer Camilo joins the genius of the architect Siza Vieira, and the work speaks for itself. The Studies' Centre about Camilo, inaugurated in 2005, completes the didactic and pedagogical action of the Camilo's House of making yield the institution heritage, on the bibliographic, handwritten documentation, most of it autograph, iconography and plastic arts fields.

Location

41°23'48.1"N 8°27'50.9"W

Schedule

Monday to Friday: from 10:00 am to 5:30 pm
Weekends: from 10:30 am to 12:30 pm and from 2:30 pm to 5:30 pm
It closes on holidays

Library schedule

Tuesday to Friday: from 10:00 am to 5:15 pm

Free entrance

www.camilocastelobranco.org



Surrealism Portuguese Centre

The Portuguese surrealism capital is in Vila Nova de Famalicão. Here we have more than three thousand surrealism works from more than 130 artists. Among them, we highlight Carlos Calvet, Carlos Eurico da Costa, Cruzeiro Seixas, Eurico Gonçalves, Júlio dos Reis Pereira, Manuel D'Assumpção, Mário Botas, Mário Cesariny, Mario Henrique Leiria, Pedro Oom, Risques Pereira, and others.



A remarkable reference of the modern and contemporary arts

The Portuguese Surrealism Centre project was born from the Cupertino de Miranda Foundation, located on the city centre, which has got a large set of important surrealism visual arts, with various techniques, like painting, drawing, sculpture, collage or objects. With all of these works it was built a collection that has been developing itself, with a huge own character as a remarkable historical importance.

Works

1- Cruzeiro Seixas
Without title or date
Candle, knife and candlestick
27 x 19 x 19 cm
Donation of Cruzeiro Seixas,
Cupertino de Miranda
Foundation's collection

2 - Cruzeiro Seixas
His eyes don't look to the
earth anymore, but his
feet are on it, 1953
Hull pacaça, paper collage,
gouache, wood and sea
object 26 x 19 x 19 cm
Donation of Cruzeiro Seixas,
Cupertino de Miranda
Foundation's collection

3- Cruzeiro Seixas
A cup with a handle inside
like all of us, 2005
Intervened cup
7 x 15 x 15 cm
Cupertino de Miranda
Foundation's collection

4- Fernando Lemos
Myself, [1950]
Photographic print on paper
37 x 37 cm
Cupertino de Miranda
Foundation's collection

Location

41°24'22.2"N 8°31'06.8"W

Schedule

Monday to Friday:
from 10:00 am to 12:30 pm
and from 2:00 pm to 6:00 pm
Saturday and Holidays:
from 2:00 pm to 6:00 pm

Free entrance

www.fcm.org.pt



This museum takes
part in the Portuguese
Museums Network



This collection has his own character and a remarkable historical importance



National Railway Museum

Lousado Centre

You can get here by train, by car or even by bike! The Railway National Museum in Lousado, in the city of Vila Nova de Famalicão, is really close to the train station, allowing visitors to experience a great historical link between the past and the present.

Here you will find true treasures of the national railways and you'll have the opportunity of discovering the history of the railway in Portugal, through a legacy of more than 100 years.



The railway memory

The National Railway Museum in Lousado was created in the original facilities of Guimarães Portuguese Railway Company (1883/1927). It reveals the first half of the 20th century railways history, particularly about compositions and locomotives.

Opened to the public in 2003, this museum has in its exhibition several relics and a vast material associated with the railway world. This material built between 1875 and 1965 comes from eight companies, which was acquired in six countries to fifteen builders.

It takes part in the European Route of Industrial Heritage (ERIH) which is the biggest European disclosure and promotion network of Industrial Tourism. This network adds and spreads more than 1300 places and industrial museums in 13 European countries. Come to visit by train, by car or even by bicycle! The National Railway Museum in Lousado is of required visit.

Location

N 41° 21'04.70" | W 8° 31'37.60"

Schedule

Tuesday to Friday: from

10:00 am to 5:30 pm

Weekends and holidays:

from 2:30 pm to 5:30 pm

It closes on Mondays, at Easter

and from 24 to 27 December

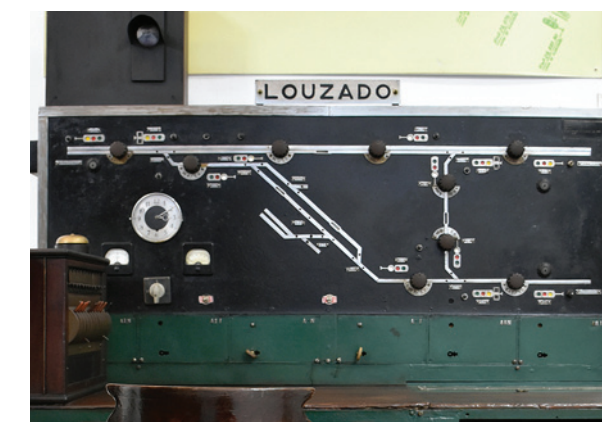
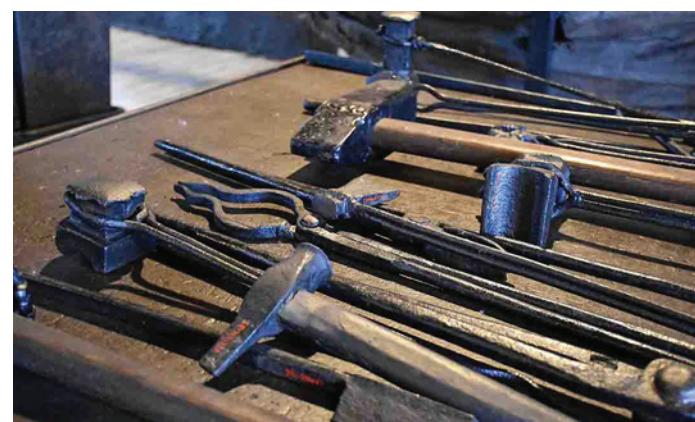
Free entrance

www.fmnf.pt



This museum takes part in the European Route of Industrial Heritage

It is one of the most important on the Portuguese railway context



Textile Industry Museum

of the River Ave Basin

The Textile Industry Museum of the River Ave Basin was founded in 1987, as a research project focused on the industrial archaeology. Besides presenting a synthesis of the historical evolution of the industrialization on the territory, it exhibits a magnificent collection of historical textile working machines, from wool spinning to the weaving mil, among others.



The Textile genetics

The permanent exhibition presents the evolution of the River Ave Basin industrialization process by highlighting the main features, such as the transition from the craft industry to the manufacturing one, the emergence of the first modern industries, the first energetic solutions used, the landscape changes and the environmental consequences, the union activity and the employee fights, among so many other aspects that will enrich the knowledge of the visitors, about industry changes in this region during the last 150 years. The historical machinery collection is a way to knowledge the different phases of the textile industry productive process.



Located in the Northwest of Portugal, the River Ave Basin is a truly marked area by the cotton textile industry. Also, the first modern textile industry was founded in this area in 1845. Since then, the textile industry began to be the main economic activity - mainly in the counties of Fafe, Guimarães, Vila Nova de Famalicão and Santo Tirso - currently it is still the most important textile region from Portugal.

The River Ave Basin Textile Industry Museum has on its own mission to investigate, preserve, document, interpret, value and spread every aspects related to the industrialization process, always protecting the historical memory.

Location

41°24'02.1"N 8°32'00.1"W

Schedule

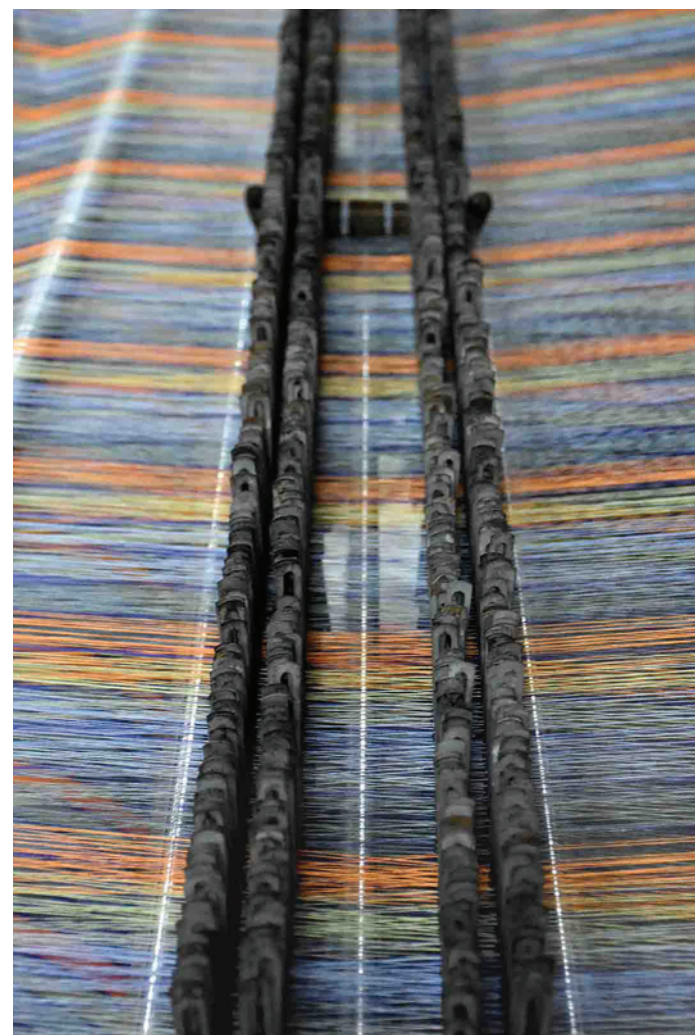
Tuesday to Friday:
from 10:00 am to 5:30 pm
Weekends: from 2:30 pm to 5:30 pm
It closes on Mondays and holidays

Free entrance

www.museudaindustriatextil.org



This museum takes part
in the European Route of
Industrial Heritage



Automobile Museum



The classic and antique cars cult

Some of the treasures from the Automobile Museum's assets, in Vila Nova de Famalicão, include an unique micro car from VEL and the one of two rare specimens from Rolls Royce. But there are other treasures, such as a specimen from the world very first mass-produced car, the T model from the Ford. The touristic-cultural structure of the city – inaugurated in September 2013, in Ribeirão, in a three thousand square meters area - is a mandatory crossing point for the collectors and admirers of the automobile industry.

It has a great wealth collection, composed of about a hundred antique cars and motorbikes, and follows up the automobile design evolution over the 20th century. It is associated with a School of Automobile Restoration, an innovative professional qualification project which joins the museum, the Vocational School CIOR and a School of Road Education directed to teaching the youngsters.

Location

41°22'02.5"N 8°32'52.9"W

Schedule

Monday to Friday: from 10:00 am to 12:30 pm and from 2:30 pm to 5:30 pm
It closes on Saturdays, Sundays, holidays and during August

Entrance

Ticket - € 2,50
Family ticket - € 7,50
Children to 12 years old and grown-ups more than 65 - free entrance

IATM

This museum takes part in the International Association of Transport and Communications Museums



BERNARDINO MACHADO MUSEUM

The Museum of the President

Bernardino Machado – who was president of the Portuguese Republic twice and one of the most important representatives of the 1st Republic – was from Famalicão by adoption. In fact, he was born in Rio de Janeiro, in Brazil, but he came with his family to Portugal, setting in Vila Nova de Famalicão, with almost nine years old.

The majestic Barão da Trovisqueira's Mansion, where Bernardino Machado Museum is installed, dignifies the memory of this prominent statesman and gives the visitor the chance to contacting with the beauty of the Brazilian building of the second half of the XIXth century. Besides the permanent exhibition which portrays the several facets of Bernardino Machado as a Man, a Pedagogue, a Scientist and a Politician, the museum also provides to the public one of the wealthier and more significant collections for the study of the 1st Republic history.

Location

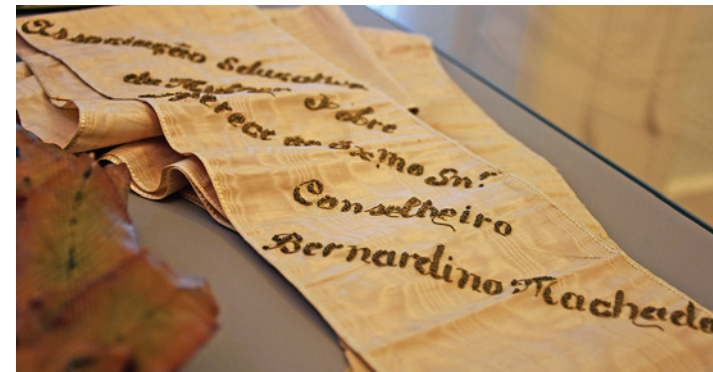
41°24'28.1"N 8°31'09.5"W

Schedule

Tuesday to Friday:
from 10:00 am to 5:30 pm
Weekends: from 2:30 pm
to 17:30 pm
It closes on Mondays
and holidays

Free Entrance
www.bernardinomachado.org


This museum takes
part in the Portuguese
Museums Network



Welcoming land

People from Vila Nova de Famalicão are truly welcoming, generous and affectionate, as the Minho's people usually are. At any time of the year, Vila Nova de Famalicão has always something to offer and to last in the memory of whoever visits the city.

There are cultural infrastructures of great relevance and a wide range of great projection initiatives. The city, at the environmental level, offers a broad number of gardens and green spaces well cared that are a synonym of quality of life, providing an excellent balm for both mental and psychological health. They are multifunctional spaces opened to leisure, culture, sports and to promote the contact with nature.

- 01 Camilo Castelo Branco House - Museum
- 02 Surrealism Portuguese Centre
- 03 Bernardino Machado Museum
- 04 National Railway Museum- Lousado Centre
- 05 Textile Industry Museum of River Ave Basin
- 06 Ceramic Art Museum of Castro Alves Foundation
- 07 Automobile Museum
- 08 Colonial War Museum
- 09 Soledade Malvar House-Museum
- 10 Sacred Art Museum in Chapel of Lapa
- 11 Museum of the Brotherhood of Nossa Senhora do Carmo in Lemenhe
- 12 Civic and Religious Museum in Mouquim
- 13 Devesa's Park
- 14 House of Arts
- 15 Ala da Frente Gallery
- 16 Interactive Tourism Centre
- 17 São Tiago de Antas Church Sacred Art Museum
- 18 Monastery Church in São Salvador de Arnosó
- 19 "Lagoncinha" Bridge
- 20 Monastery Church in Santa Maria de Landim



COLONIAL WAR MUSEUM

Memories and Histories

A fabulous collection of letters from the war godmothers, company diaries, personal diaries, stories and confidential processes, art objects, photos, bibliographies, religious objects, uniforms and weaponry. The Colonial War Museum, in Vila Nova de Famalicão, is full of information for the visitors to feed their curiosity.

Among other activities, the visitor is invited to see an exhibition and rebuild the Portuguese fighter trajectory in the Colonial War, which took place between 1961 and 1974 in the former overseas provinces of Angola, Guinea-Bissau and Mozambique.

Location

41°22'03.6"N 8°32'54.6"W

Schedule

Tuesday, Thursday and Saturday:

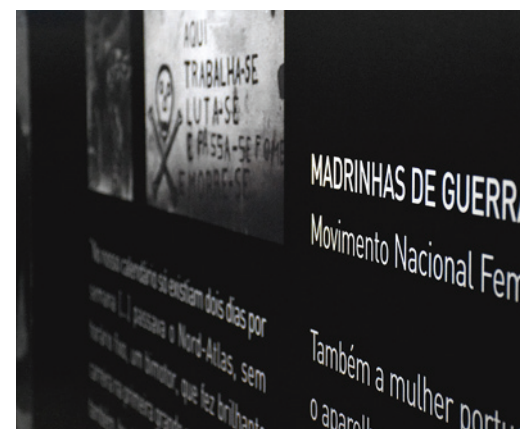
from 2:30 pm to 6:00 pm

1st Sunday of each month:

from 2:30 pm to 6:00 pm

Groups and schools:

prior booking

Free Entrancewww.museuguerracolonia.pt

Devesa's Park



Sports, Culture and ecotourism

A visit to Devesa's Park can be a real mix of sensations and experiences. Besides the sports activity provided by the park, a simple and relaxing tour gives the visitor the chance to contemplate a great diversity of animal species (fauna), namely birds, mammals and reptiles, amphibians, fishes, invertebrates. This park is a permanent invitation to enjoy nature on its best in Vila Nova de Famalicão city.

The park, that is called “the green lung” of the city, was opened in 2012. With 23 hectares of area, it is crossed by a river and a lake, presenting itself as the perfect refuge for multiple animal species. With an outdoor auditorium for shows and concerts as well as an exhibition area installed in the House of the Territory, which holds cultural and historical spaces that show the visitors marks from the past, this park also surprises for its cultural model. It is possible to watch art works through the rebuilding of dead trees, but also through historical and archaeological landmarks.

Location

41°24'36.1"N 8°30'28.6"W

Schedule

Summer (22 Mar to 31 Oct)

from 6:00 am to 12:00 pm

Winter (1 Nov to 21 Mar)

from 6:00 am to 10:00 pm

www.parquedadevesa.com



A “green lung”
right in Famalicão
city centre

Carnival, the longest night of the city

In the last years, Vila Nova de Famalicão has been the meeting point for thousands of revellers from the North of Portugal, who choose this city to experience a typically popular Carnival. Defined by the free and joyful participation of the people, the Carnival in Vila Nova de Famalicão lasts all night long. It is a compulsory stop point for those who enjoy the Carnival. Here you simply don't watch the parade, you take active part on it.



Unique, spontaneous and genuine

“The first rule is to go masked, the second is that you have to participate instead of just watching, and the third is that there are no specific rules to live the Carnival in Vila Nova de Famalicão. It is so, on a free and spontaneous way, how the Carnival night is enjoyed in this city of Minho and, for that reason, we consider it is different from the others. There is no program nor attractions, much less entertainers, actors or well-known faces from the soap operas or the TV. Everyone is actor on this party, as long as they are masked and with spirit of revelry. From the grandparents to the youngsters, but especially young people during a single night when everyone is young until four or five o'clock in the morning...”

“...A kind of creative poisoning chaos, where each one does whatever he wants to do and walks wherever he wants, daring the rules and the conventions. Everyone customized, nobody knows anybody and everybody gets along with each other. Thus, this is an inorganic Carnival, from urban and contemporary roots, but whose experiences come from the “Entrudo” tradition, with masked people naked from all kind of prejudices and conventions.”

by José Augusto Moreira, journalist from Público

Date

Carnival Monday night

Location

City Centre

41°24'18.4"N 8°31'07.0"W



“Antoninas” Celebrations



We make the party on the streets

When June is coming we feel the smell of summer in the air, and that's when the traditional parties in honour of the Popular Saints begin, throughout the country. Santo António, largely venerated in Vila Nova de Famalicão city, is treated like the true patron of the city, giving so that reason for the local festivities: the "Antoninas". There are several days of partying, with moments of great tradition and revivalism as the marches, the bread distribution, the religious procession, the raids and the folklore.

The nights are animated within parties with music and dance, by hearing popular songs, always with big names on the programme. Being well ornate and very colorful, all the streets are filled with the smell of grilled sardines and many balloons, as well as we can feel everywhere a great aroma of basil that is always accompanied by a popular poetry related to Santo António.

Data

A full week before and until the 13th of June, the Municipal Holiday

Location

Vila Nova de Famalicão, city centre



Handicraft Fair, the powerful art of hands

Soon, in the early days of September, by the end of summer holidays, the Handicraft and Food Fair takes place in Vila Nova de Famalicão city. Over a week, through more than a hundred of exhibitors it is possible to watch the work done in real time by the artisans who reveal the secrets of the manual ancestral arts, as the basket-weaving, the clay, the clog-making, the metalworking, the weaving, the jewellery, the woodwork, among others. That is an important touristim-cultural event being growing more and more each year.

In addition to the artisans and live work, the Fair schedule is enriched with a daily, engaging and transversal animation programme.

At the same time, it takes place the Gastronomy Fair where it is possible to discover the most genuine flavours of Portuguese regional cuisine and national sweets.

Location

41°24'16.7"N 8°31'00.3"W
Old Fair Field

Date

First week of September

Free Entrance

Programme

www.vilanovadefamalicao.org



IT'S ABOUT TIME TO TAKE A SIT ON THE TABLE

Typical food of this region of Minho

After the completely surprising discovery of this city identity and essence, by going through the green landscapes, seeking bridges, monasteries and old stately houses which really can feed the soul and the spirit, there is nothing better than a fearless and risk-free dive into the flavours of the typical food from this region. Take a sit on the table and delight yourself with the rich and genuine food proposals composed by the traditional products of the region, prepared by the hands of whom knows very well how to preserve and respect this authentic cultural heritage which makes us so proud.

Travel through our food origins and comfort yourself with our codfish, our famous “papas de sarrabulho” with “rojões” (different parts of pork meat harmonization), the Portuguese stew and the roasted lamb. Also, delight yourself with the traditional sweets which come from the ancient convents and taste the famous pudding and the remarkable “pão de ló” (sweet cake). Joining this authentic and genuine gastronomy from this region, there is a new generation of restaurants that look at the traditions and the origins to reinvent flavours and scents, by exploring the new concepts of the contemporary kitchen.

Find places to eat at
tripadvisor.pt
boacamaboamesa.expresso.sapo.pt

tripadvisor®

BOA CAMA BOA MESA

Expresso

A land of flavours,
an invitation to take
a sit on the table!



House of Arts a place that is yours

The Casa das Artes (House of Arts) in Vila Nova de Famalicão city is a big cultural reference in the region and in the country.

Built with the purpose of being the house of all the arts, this space combines a contemporary and eclectic programme, with a charismatic and quality space, attracting and increasing such a greater number of people.

Composed by a Big Auditorium with capacity for half a thousand people, a Small Auditorium for a hundred and fifty people, a Music Hall for intimate shows and an awesome Foyer for exhibitions, the Casa das Artes (House of Arts) hosts here big show names, being at national and international levels.

Location

41°24'49.9"N 8°31'03.0"W

Schedule

Tuesday to Thursday:
from 10:00 am to 7:00 pm
Friday: from 10:00 am
to 7:00 pm and from
8:30 pm to 10:30 pm
On weekends and holidays
with shows, the ticket office
opens 1 hour before the
beginning of the show and
closes 1 hour later on

www.casadasartes.org



Ala da Frente exhibitions gallery

The Ala da Frente Gallery is the most recent cultural spot of the city of Vila Nova de Famalicão. Its name is due to the fact that the room is located on the main facade of the beautiful building where the Bernardino Machado Museum is installed. Since the very beginning, its main purpose is to show contemporary art exhibitions, on a programming line of access to the core of artists who have consolidated, innovative and coherent works. It's a place for those who like to be in the culture forefront. Over its 50 square meters reserved to art, on the Barão da Trovisqueira's Mansion, we already had the opportunity to see artists like Jorge Molder, Rui Chafes, João Queiroz, José Pedro Croft and Pedro Cabrita Reis, who had their works here exposed.

Location

41°24'28.1"N 8°31'09.5"W

Schedule

Tuesday to Friday:
from 10:00 am to 5:30 pm
Weekends: from 2:30
pm to 5:30 pm

Free entrance



Romanic Route

The Romanic Route, in Vale do Ave, invites you to board on an inspiring journey throughout some places full of history, near unique monasteries, churches, chapels, memorials and bridges. The Romanic style is an architectonic style, which emerges in Portugal at the late 11th century, in the context of a wider phenomenon of the culture europeanization. As a predominantly religious architecture, it is related to the diocesan and parish ecclesiastical organization and with the monasteries of various monastic orders, founded or reconstructed on the 12th and 13th centuries.



ROMANIC ROUTE

São Tiago de Antas Church

From a religious Romanic architecture of transition to the gothic style, the São Tiago de Antas Church was built in the mid 13th and 14th centuries.

Being a church of a simple floor plan with only one nave and a square main chapel, its decoration is overdue and from local inspiration.

Location

41°24'08.8"N 8°30'35.5"W

Contacts

Congregation of
São Tiago de Antas

**MONUMENT OF
PUBLIC INTEREST**



ROMANIC ROUTE

Monestary Church São Salvador de Arnoso

In Arnoso Santa Eulália, the Romanic style of the church, heavily changed by the deep interventions done during the 40's by the General Direction of National Buildings and Monuments, is a national monument.

From the ornamental point of view, the axial portal as well as on the side door of the nave, a curious tympanum inscription "ERA MCLXXXIII" (in the Christ Era, year of 1156), date of the church consecration, deserves attention. The highlights also include the unique frescos from the 15th century. In the surrounding area of the building, there is a river beach in the Guizande river banks.

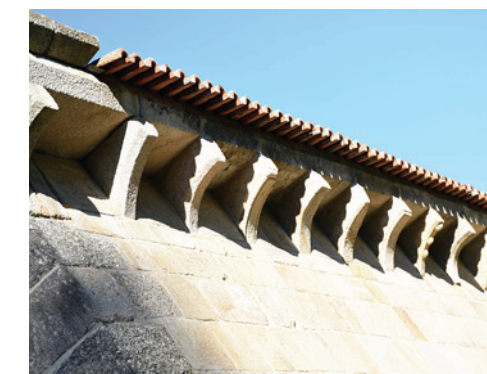
Location

41°28'01.5"N 8°31'21.1"W

Contacts

Vila Nova de Famalicão
City Council

**NATIONAL
MONUMENT**



ROMANIC ROUTE

Lagoncinha Bridge

The Lagoncinha Bridge, located in the south of the city, in Lousado, above the River Ave, is a remarkable example of a Romanic bridge, both in terms of engineering and history, and a first plan asset element at local level and even in all the country. It is a bridge with an horizontal deck, composed of two ramps above 6 unequal arches, some with round arches and others with ogee arches. It has consistently foothills with triangular and quadrangular breakwaters. The walls of the bridge are made of granite stonework and the pavement is covered with slabs, in granite too.

Location

41°20'56.4"N 8°31'11.7"W

Around the bridge, in the surroundings

We can highlight the Saint Lourenço chapel from the 18th century and the Cruise, as well as the Shrine of Nosso Senhor dos Aflitos

NATIONAL MONUMENT



ROMANIC ROUTE

Monastery Church Santa Maria de Landim

The meeting with the history of Famalicão don't allow us to forget the Landim Monastery, one of the oldest and most influent religious and social structure by that time, before the portuguese sovereignty foundation. The old monastery was founded by the Benedictine but it had a huge part of its history connected with the Regular Canons of Saint Augustin. Today, the monastery is of private property but the church follows to be the religious head office of the comunity. It preserves as well as it traces from the passed Romanic and Gothic as well as it is an excellent place for a long visit to the most monumental and religious heritage from the city of Vila Nova de Famalicão.

Location

41°22'45.1"N 8°27'49.3"W

Contacts

Congregation of Landim

MONUMENT OF PUBLIC INTEREST



SPORTS

Sports events

All over the year, Vila Nova de Famalicão is a stage of several sport events, truly amazing and diversified, which attract thousands of people to the city, as for participate or simply to watch and vibrate with the athletes.

These are competitive events, although they are open to the community in its overwhelming majority. The real sports party happens in different ways over the year in Vila Nova de Famalicão.

Some events

- Half Marathon of Famalicão
- S. Silvestre Run
- Famalicão- Joane Competition
- Famalicão Duathlon
- Dance Famalicão
- 24 hours Mountain Bike
- Famalicão Rally
- ...



FAMALICÃO[®] CIDADE TÊXTIL

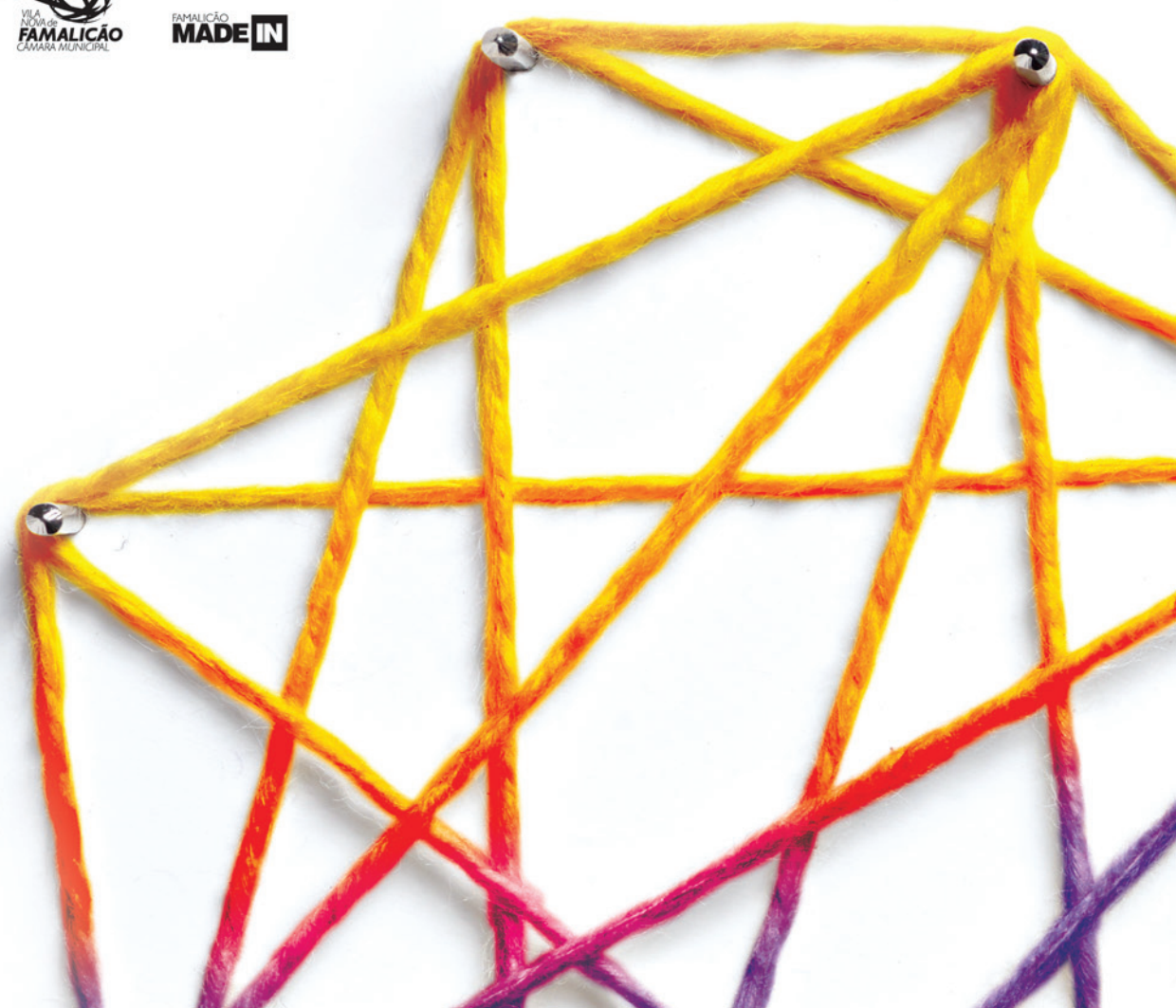


FAMALICÃO
MADE IN

WHAT WE ARE

Vila Nova de Famalicão is the textile capital of Portugal for a variety of reasons: the industrial identity, the companies that are based here, the entrepreneurs, and because of its workers. By CITEVE and CeNTI, Bacía do Ave Textile Industry Museum and the Portuguese Textile and Clothing Association. For the Cluster Textile: Technology and Fashion. Because of the enormous contribution of the textile industry in Famalicão to the national economy.

Famalicão is the epicenter of this region and is home to a complete, structured, flexible and dynamic sector – a cluster that is considered the biggest in Europe – and where, in a radius of 60 kilometers, the textile industry can provide clients with all the necessary solutions throughout the production chain.



CONTACTS

VILA NOVA DE FAMALICÃO CITY HALL

Praça Álvaro Marques,
4764-502 Vila Nova de Famalicão
Telephone +351 252 320900
www.vilanovadefamalicao.org
camaramunicipal@vilanovadefamalicao.org
Schedule Monday to Thursday:
09:00 am to 6:00 pm
Friday: 09:00 am to 12:00 pm
GPS N 41° 24' 37" W 008° 31' 13"

TOURISM OFFICE

Praça D. Maria II
4760-111 Vila Nova de Famalicão
Telephone +351 52 312564 Fax
+351 252 312564
famaliaoturismo@vilanovadefamalicao.org
Schedule Monday to Thursday:
09:00 am to 6:00 pm
Friday: 09:00 am to 12:00 pm

INTERACTIVE TOURISM CENTRE

Praça D. Maria II
4760-111 Vila Nova de Famalicão
Telephone +351 252 317474
lojainterativa@vilanovadefamalicao.org
Schedule Monday to Sunday:
10:00 am to 7:00 pm

CAMILO CASTELO BRANCO HOUSE- MUSEUM / STUDIES' CENTRE

Av. de S. Miguel, nº 758
4770-631 S. Miguel de Seide
Tel +351 252 327 186 (Camilo
Castelo Branco House-Museum)
Tel +351 252 309 750 (Studies' Centre
of the writer Camilo Castelo Branco)
geral@camilocastelobranco.org
www.camilocastelobranco.org
Schedule Tuesday to Friday:
10:00 am to 5:30 pm;
Saturday and Sunday: 10:30 am to
12:30 pm and 2:30 pm to 5:30 pm. It
closes on Monday and Holidays
Free entrance

FUNDAÇÃO CUPERTINO DE MIRANDA MUSEUM / SURREALISM

PORTUGUESE CENTRE

Praça D. Maria II 4760-111 VNF
Tel +351 252 301 650
museu@fcm.org.pt
www.fcm.org.pt
Schedule Monday to Friday: 10:00 am to
12:30 pm and 2:00 pm to 6:00 pm Saturday
and Holidays (during Temporary Exhibitions
periods): 2:00 pm to 6:00 pm. It closes
on Sunday and Week-ends on August
Free Entrance

RAILWAY NATIONAL MUSEUM - LOUSADO CENTRE

Largo da Estação Lousado
4760-623 Vila Nova de Famalicão
Tel +351 252 153 646 / +351
252 153 646 (Fax)
museuferroviario@vilanovadefamalicao.org
www.fmnf.pt
Schedule Tuesday to Friday: 10:00 am to 5:30
pm / Saturday, Sunday and Holidays: 2:30
pm to 5:30 pm. It closes on Monday, Easter
and from the 24th to 27th of December
Free entrance

TEXTILE INDUSTRY MUSEUM OF THE RIVER AVE BASIN

Rua José Casimiro da Silva
4760-355 Calendário
Tel +351 252 313 986 / +351
252 377 110 (Fax)
geral@museudaindustriatextil.org
www.museudaindustriatextil.org
Schedule Tuesday to Friday:
10:00 am to 5:30 pm;
Saturday and Sunday: 2:30 pm to 5:30 pm
It closes on Monday and Holidays
Free entrance

AUTOMOBILE MUSEUM

Parque Lago Discount - Lote 48 B
4760-727 Ribeirão
Tel +351 252 314 045
museudoautomovelfamalicao@gmail.com
Schedule Tuesday to Saturday: 10:00 am to
12:30 pm and 2:30 pm to 5:30 pm. It closes on
Monday, Sunday, Holidays and during August

Price: 2,50€/ free entrance less than 12
years old and upper than 65 years old

BERNARDINO MACHADO MUSEUM

Rua Adriano Pinto Basto, nº 79
4760-114 Vila Nova de Famalicão
Tel +351 252 377 733 / +351 252 377 110 (Fax)
museu@bernardinomachado.org
www.bernardinomachado.org
Schedule Tuesday to Friday: 10:00 am to 5:30 pm;
Saturday and Sunday: 2:30 pm to 5:30 pm
It closes on Monday and Holidays
Free entrance

COLONIAL WAR MUSEUM

Parque Lago Discount - Lote 35 A
4760-727 Ribeirão
Tel +351 252 322 848 / +351 252 376
323 / +351 252 376 324 (Fax)
museuguerracolonial@adfa.org.pt
www.museuguerracolonial.pt
Schedule Tuesday, Thursday and
Saturday: 2:30 pm to 6:00 pm
It closes during August
Free entrance

DEVESA'S PARK

Rua Fernando Mesquita - Antas, 2453 - D
4760 034 Vila Nova de Famalicão
parquedadevesa@vilanovadefamalicao.org
www.parquedadevesa.com
Casa do Território - Tel +351 252 374 184
casadoterritorio@vilanovadefamalicao.org
Educational Services - Tel +351 252 317 200
sedevesa@vilanovadefamalicao.org
Urban Gardens - Tel +351 252 315 194
hufa@vilanovadefamalicao.org

HOUSE OF ARTS

Av. Dr. Carlos Bacelar
4760-103 Vila Nova de Famalicão
Tel +351 252 371 297 / +351 252 371
298 / +351 252 371 299 (Fax)
casadasartes@vilanovadefamalicao.org
blog: www.casadasartes.blogspot.com Ticket
office: casadasartsvnfbilheteiraonline.pt
Schedule Tuesday to Thursday: 10:00 am to
7:00 pm / Friday: 10:00 am to 7:00 pm and

8:30 pm to 10:30 pm. On Saturday, Sunday
and Holidays with Shows, the Ticket office
will open one hour before the beginning of
the Show and will close one hour after.

ALA DA FRENTE GALLERY

Palacete Barão da Trovisqueira
Rua Adriano Pinto Basto, 79
4760-114 Vila Nova de Famalicão
www.vilanovadefamalicao.org
aladafrentegaleria@vilanovadefamalicao.org
Tel +351 252 320 900
Schedule Tuesday to Friday:
10:00 am to 5:30 pm;
Saturday and Sunday: 2:30 pm to 5:30 pm

SACRED ART MUSEUM IN S. TIAGO DE ANTAS

Rua Frei Bartolomeu dos Mártires
4760-037 Santiago de Antas
Tlm +351 965 441 040
nelsonbcvale@gmail.com
Visits by prior appointment
Free entrance

CIVIC AND RELIGIOUS MUSEUM IN MOUQUIM

Rua da Belavista, nº 714
4770-361 Mouquim
Tlm +351 925 858 962
jose.moreira.lima@hotmail.com
Visits by prior appointment
Free entrance

ARTISTIC CERAMICS MUSEUM OF CASTRO ALVES FOUNDATION

R.Comendador Castro Alves, nº 391
4765-053 Bairro
Tel +351 252 931 053 / +351
252 933 070 (Fax)
fundacao@fundacaocastroalves.org
www.fundacaocastroalves.org
Schedule Monday to Friday: 10:00 am to 12:00
pm and 2:00 pm to 5:00 pm / Saturday: 3:00
pm to 6:00 pm (Visits by prior appointment).
It closes at Week-ends and Holidays
Free entrance

MUSEUM OF THE CONFRATERNITY OF NOSSA SENHORA DO CARMO

Largo de Nossa Senhora do Carmo
4775-418 Lemenhe
Tlm +351 967 323 979
senhoradocarmo@sapo.pt
Visits by prior appointment
Free entrance

SACRED ART MUSEUM IN CAPELA DA LAPA

Largo Tinoco de Sousa
4760-108 Vila Nova de Famalicão
museuartesacra@vilanovadefamalicao.org
Schedule Tuesday: 10:00 am to 1:00 pm
and Thursday: 2:30 pm to 5:00 pm. It is
closed during the other days of the week.
Free entrance

HOUSE-MUSEUM SOLEDADE MALVAR

Av. 25 de Abril, nº 104 4760-101 VNF
Tel +351 252 318 091 / +351
252 377 110 (Fax)
soledademalvar@vilanovadefamalicao.org
Schedule Tuesday to Friday:
10:00 am to 5:30 pm.
It closes on Monday, Week-ends and Holidays
Free entrance

OTHER MUNICIPAL EQUIPMENTS AND SERVICES

MUNICIPAL ARCHIVE ALBERTO SAMPAIO

Rua Adriano Pinto Basto
4760-114 Vila Nova de Famalicão
tel +351 252 312 661
arquivomunicipal@vilanovadefamalicao.org
Schedule Monday to Thursday: 9:00 am to
5:30 pm / Friday: 9:00 am to 11:30 am

MUNICIPAL LIBRARY

Camilo Castelo Branco
Av. Dr. Carlos Bacelar – Ap 154
4761-925 Vila Nova de Famalicão
Tel +351 252 312 699 / +351
252 318 689 (Fax)
geral@bibliotecacamilocastelobranco.org
www.bibliotecacamilocastelobranco.org
Schedule Monday 2:00 pm to 7:30 pm; Tuesday
to Friday 10:00 am to 7:30 pm and Saturday
10:00 am to 1:00 pm and 2:00 pm to 5:00 pm
Joane +351 252 993 756
Lousado +351 252 492 983
Pousada de Saramagos + 351 252 992 045
Riba de Ave +351 252 981 620
Ribeirão +351 252 494 107

HOUSE OF THE YOUTH

Rua Manuel Pinto de Sousa, 146
4760-155 Vila Nova de Famalicão
Tel +351 252 314 582/3
casadajuventude@vilanovadefamalicao.org
www.juventudefamalicao.org
Schedule Monday to Friday:
10:00 am to 6:00 pm/
Saturday: Services by prior appointment
accordingly to those available

CREDITS

DIRECTOR Paulo Cunha
EDITOR José Agostinho Pereira
TEXTS Isaura Costa
PHOTOGRAPHY António Freitas, Diana Correia
GRAPHICS AND PAGINATION José Pedro Almeida
PROPERTY Câmara Municipal de
Vila Nova de Famalicão



WWW.VILANOVADEFAMALICAO.ORG